

# MONTHLY MEMBERSHIP PROGRESS REPORT

District 14 M

Results as of: 12/31/2023

GMT:

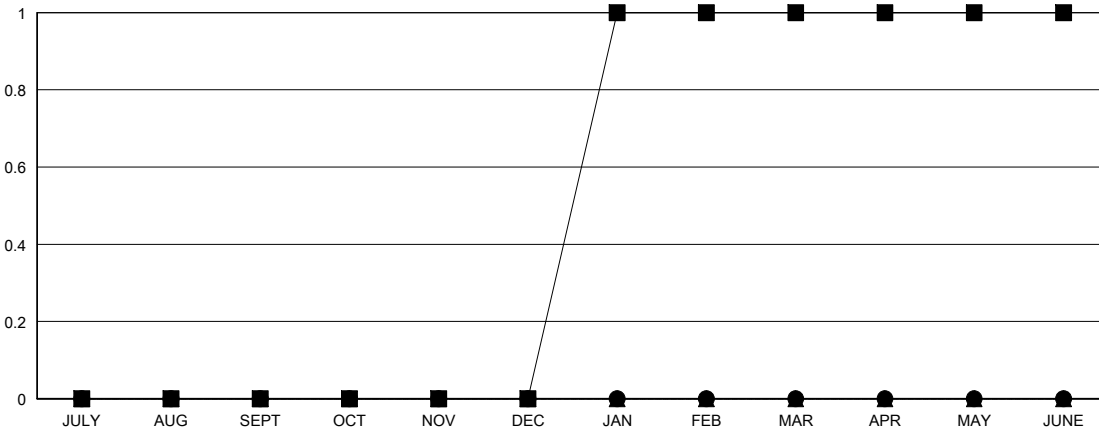
LOCATION PENNSYLVANIA

GMT CA

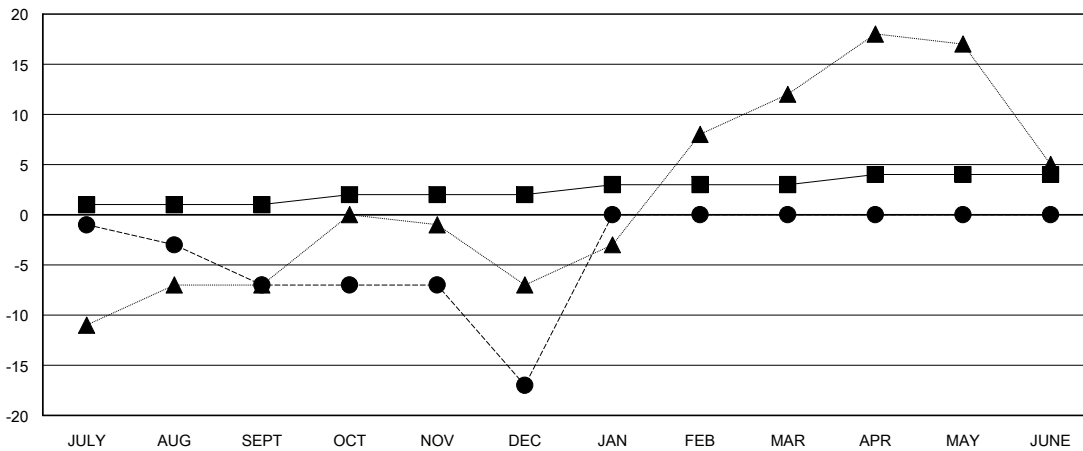
Clubs			
RESULTS FOR 2023-2024			
QUARTER	NEW CLUB GOAL	NEW CLUBS	DROPPED CLUBS
JULY/AUG/SEPT	0	0	0
OCT/NOV/DEC	0	0	0
JAN/FEB/MAR	1	0	0
APR/MAY/JUNE	0	0	0

Members			
RESULTS FOR 2023-2024			
QUARTER	MEMBER GROWTH NET GOAL	MEMBER GROWTH ACTUAL	DROPPED MEMBERS ACTUAL (including transfers)
JULY/AUG/SEPT	1	15	20
OCT/NOV/DEC	1	15	24
JAN/FEB/MAR	1	0	0
APR/MAY/JUNE	1	0	0

GOALS AND ACTUAL NEW CLUBS CUMULATIVE



GOALS AND ACTUAL MEMBERS CUMULATIVE



DROPPED CLUBS: 0	14 CLUBS OF 41 ADDED 1 OR MORE NEW MEMBERS	<b>GENDER DISTRIBUTION</b> MALE 623 (62.36%) FEMALE 376 (37.64%)
<b>DROPPED MEMBERS</b> DECEASED 10 CLUB CANCELLED 0 OTHER 34 TOTAL 44	<a href="#">CLICK HERE FOR CUMULATIVE MEMBERSHIP DATA</a>	TOTAL FAMILY UNIT MEMBERS 212 FAMILY MEMBERS PAYING HALF DUES 113